

# EXONIC NAV MEDIA INTERFACE

Part no. EXI-MC06M

Installation Guide for Mercedes Benz

2006+ M-Class (W164)

2006+ R-Class (W251)

2007+ GL-Class (X164)

EXONIC MOBILE ENTERTAINMENT  
6293 Burnham Ave. Buena Park, CA 90621



Full Dashboard View of Vehicle



**STEP 1:** Using a plastic pry tool, pry up on wooden trim below the radio to release (2) plastic snaps.



**STEP 2:** Remove the wood trim below the radio and locate the two slide locks underneath the radio.



**STEP 3:** Using a screwdriver tip pull down on slide lock to release.



**STEP 4:** Pull down slide locks on both sides. And slide radio out of dash.



**STEP 5:** Flip radio over to locate ribbon cable.



**STEP 6:** Power up unit on bench.



**STEP 7:** Press the eject button to keep face open and then disconnect power.



**STEP 8:** Turn unit upside down to expose the ribbon cable underneath the face of the unit.



**STEP 9:** Disconnect the ribbon cable from the display section of the navigation unit.



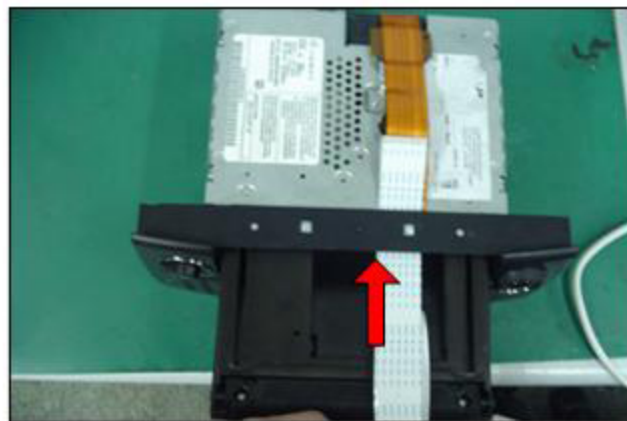
**STEP 10:** Loosen the ribbon cable from the chassis.



**STEP 11:** Pull ribbon cable back and leave exposed.



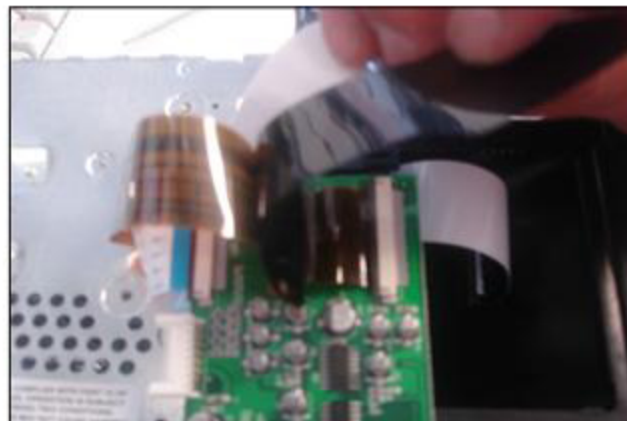
**STEP 12:** Inspect the supplied ribbon cable for any damage. Connect the ribbon cable connector side to the display section of the navigation unit.



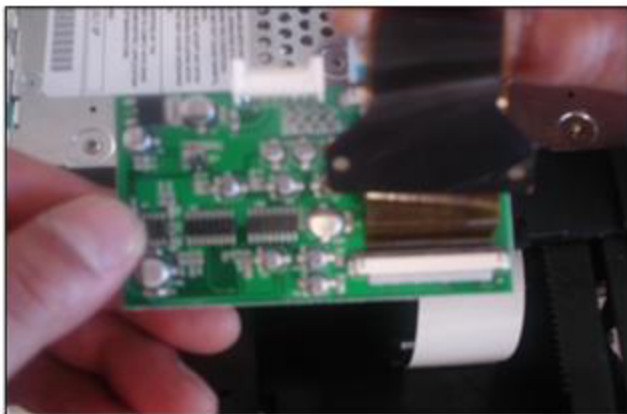
**STEP 13:** Route the supplied ribbon cable between the chassis and display section.



**STEP 14:** Connect the supplied ribbon cable to the interface board.



**STEP 15:** Connect the factory ribbon cable to the interface board.



**STEP 16:** Make sure the ribbon cable connections are secure.



**STEP 17:** Test unit to verify if factory display is operable. If there is no picture, re-check all ribbon cables.