

EXONIC NAV MEDIA INTERFACE

Part no. EXI-MC06M

Installation Guide for Mercedes Benz

2005+ CLK-Class (W209)

2005+ C-Class (W203,W204)

EXONIC MOBILE ENTERTAINMENT
6293 Burnham Ave. Buena Park, CA 90621



Full Dashboard View of Vehicle



Close up of in-dash monitor.



STEP 1: Using a plastic pry tool, pry up on wooden trim around the shifter base to release (2) plastic snaps.



STEP 2: Release the trim base and place shifter in lowest gear to move base out of the way.



STEP 3: Unclip ashtray and cigarette lighter, disconnect wires and completely pull piece out of center console.



STEP 4: Cover shift knob and base trim in a towel to protect from any damage.



STEP 5: Unscrew (2) screws from the Left and Right side underneath the HVAC controls.



STEP 6: Pulling away from the dash unclip the two tabs on the HVAC control unit and disconnect the whole unit.



STEP 7: Unscrew (2) screws from the Left and Right side underneath the Navigation unit.



STEP 8: View of Right side screw underneath the Navigation unit.



STEP 9: Using a plastic pry tool, unclip the wooden trim above the navigation control unit.



STEP 10: Unscrew (2) screws from the Left and Right side directly above the Navigation unit..



STEP 11: Power up unit on bench.



STEP 12: Press the eject button to keep face open.



STEP 13: Turn unit upside down to expose the ribbon cable underneath the face of the unit.



STEP 14: Disconnect the ribbon cable from the display section of the navigation unit.



STEP 15: Loosen the ribbon cable from the chassis.



STEP 16: Pull ribbon cable back and leave exposed.



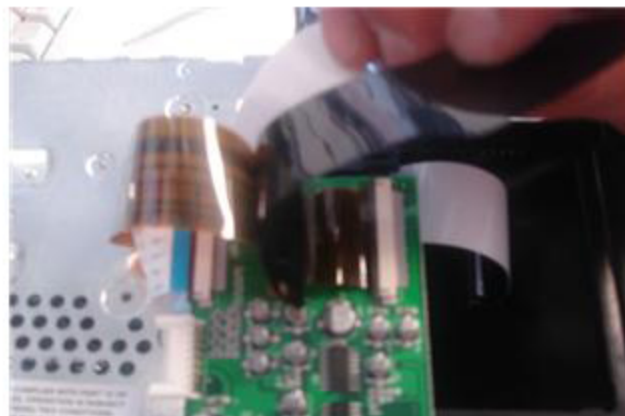
STEP 17: Inspect the supplied ribbon cable for any damage. Connect the ribbon cable connector side to the display section of the navigation unit.



STEP 18: Route the supplied ribbon cable between the chassis and display section.



STEP 19: Connect the supplied ribbon cable to the interface board.



STEP 20: Connect the factory ribbon cable to the interface board.



STEP 21: Make sure the ribbon cable connections are secure.



STEP 22: Test unit to verify if factory display is operable. If there is no picture, re-check all ribbon cables.