

E65/66 Interface Install Manual

Warning!

1. Before working, please make sure the vehicle power is off (please keep in mind when pulling out the key, only monitor supply would be off but whole vehicle power supply would be off 5 minutes later)
2. Starting with separating of the monitor and the connector removed in working may causes a error code. Do not start until the work is done.
3. Please use appropriate measure of tools.
4. Do not force excessively in assembling or disassembling, tightening or pulling.
5. Using protecting clothe or taping around the working area, take care of scars.
 1. 6. Please make sure to connect the power cable using a fuse when you use it with pulling out the power supply.

There are star shape screws on upper part of the monitor. Using exclusive instrument, loosen the screws and remove the monitor.



Please be careful not to make scars on wood trim when pulling out the monitor. Sometimes it is not pulled out easily as the backside white connector may be caught. Then lift up the dashboard slightly and it may be easily pulled out.

There are two connectors on backside of the monitor. White one should be disassembled before the black one.

Assembling order is the reverse of that of disassembling.

This is the fixing lock in the side of the monitor.



Press the fixing lock then push it back to separate front and back panel.



It shows opposite side lock.



Remove the connector between front and backside panel



This is separated backside panel.



It shows separated front panel.



These are back light module and interface connector separated.



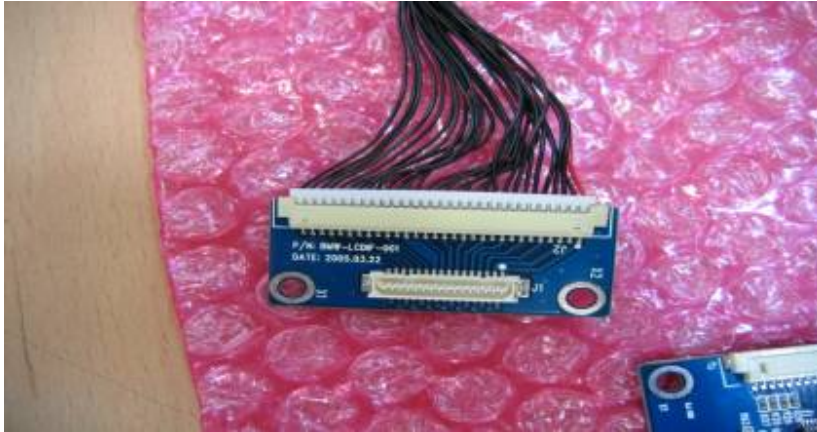
It shows LCD connector



Connect the interface connector with the LCD connector.



Install the joint PCB above DCL connector using double-side tape.



Cut the LCD cover a little bit wider than joint PCB as shown in the picture.



It shows the location of the input connector and connection status.



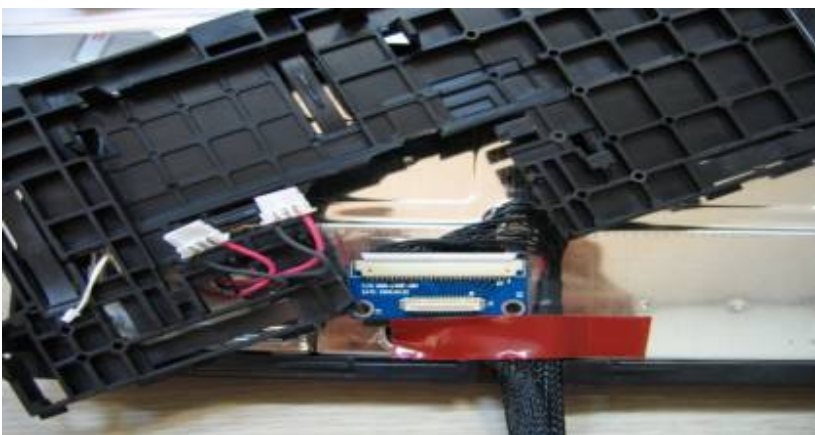
Assemble the LCD cover and then the yellow color film cable.



This is connecting appearance.



It shows the LCD Cover Cutting and the connecting appearance. Left is output and right is input.



Fix the Lock as shown in the picture and then assemble the opposite side.



Assemble the connector between front and backside panel.



Be careful not to damage the cable when assembling.





This is backside view after assembling. Right side is the output and the opposite is input. Connect the cable to input and output of the interface respectively. Be careful not to reverse the input and output.

[RADIO TUNER conversion](#)

Open the C-filler in the back of driver's seat.



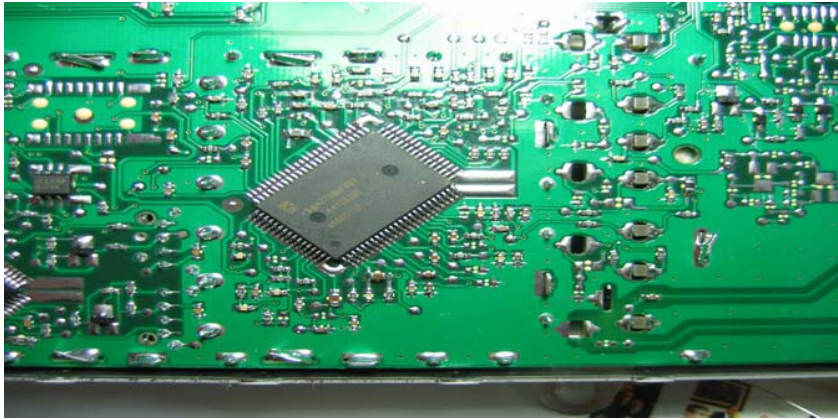
Remove the tuner screws and separate the both side connectors, and then pull out the tuner.



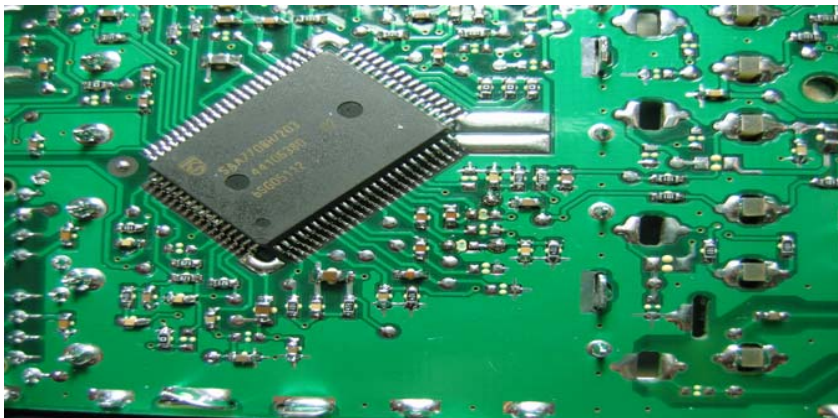
It is the picture of the radio tuner.



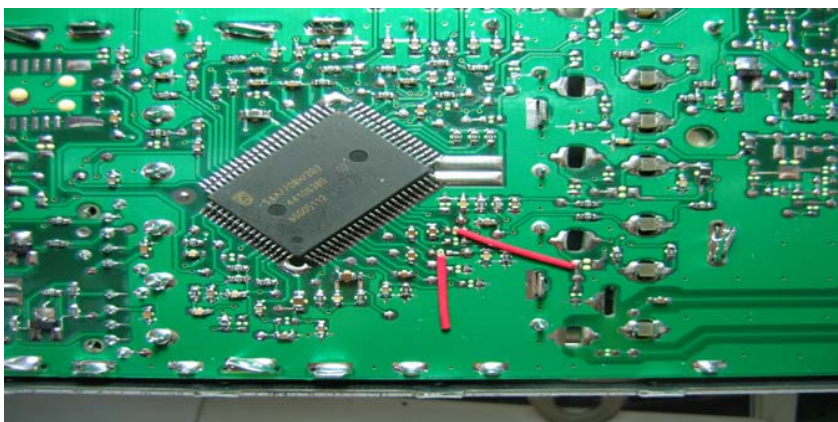
The picture of the CHIP



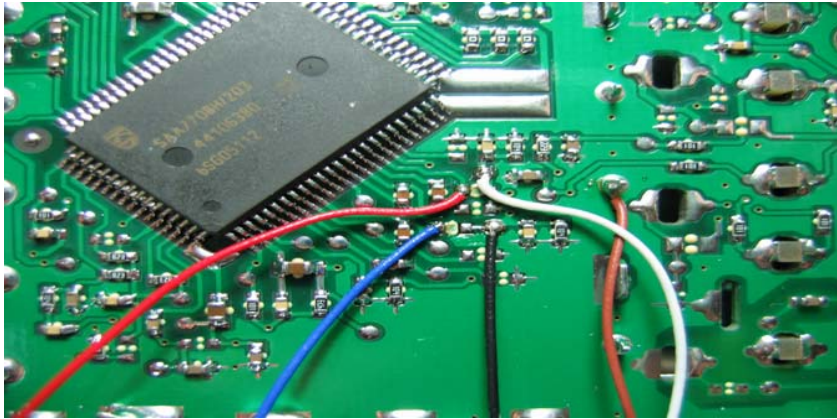
Remove the element of the indicated part



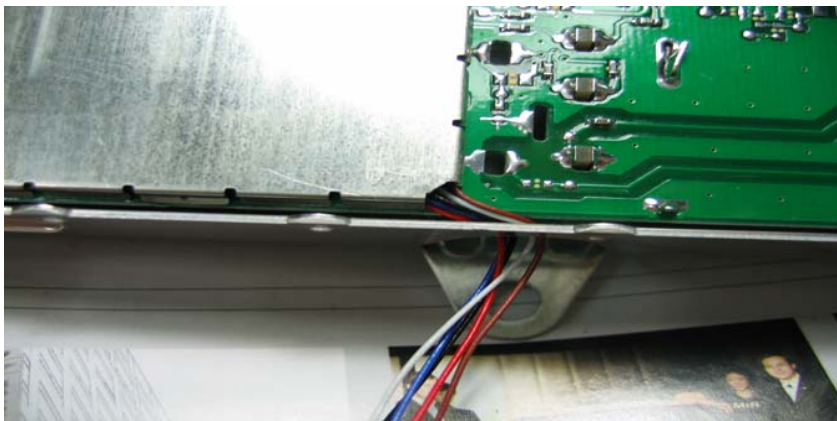
Picture of indicated part



Solder the IN and OUT lines as shown in the picture.



Close the cover, arrange the cables and take them out.



Close the outside cover and finish.



Next, connect the power supply connector (ACC 12V+ , GND) to interface module.

Connect the IR Sensor Connector.

Connect the Back light 12V+

Connect outside input (Video & Audio)

Connect the Audio In and Out.

Connect the monitor connector.

Fix the interface module using the both-sided tape.

Fix the IR sensor at inside of air exhaust outlet on the monitor.

Start the engine, test the operation and check the display.

Finding the SPEED line from E65/66 CAS when connecting the navigation.

Remove the wood center grain.

Remove the center monitor, open the under cover of the monitor and remove the wood grain fixing screws.

Remove the left and right side screws.

There is the connector set in the key box. Remove this connector and connect the SPEED line (brown/red) to pin 38. Program setup method